



# HIGHWAY

## 【MAIN APPLICATIONS】

- Road Joints
- Soundproof Wall Joint
- Sound-absorbing Panels
- Illuminating Equipment and Base Plate
- Direction Board
- Jet Fan in Tunnels
- Grating Joint
- Guard Rail Joint
- ETC(Electronic Toll Collection) Board
- Information Board
- Storm Drain Cover Securing

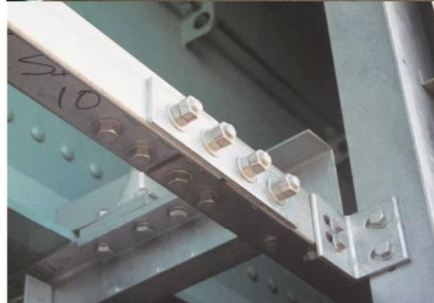
# Safety is Power Anti-Vibration Hexagon Nuts



**MADE IN JAPAN |**  
**Since 1974**



Lighting Columns Anchor Portion  
 (Metropolitan Expressway)



**Smallest parts that require highest reliability**

**All Grades & Surface Treatment**

Various Soundproof Walls

**Bore  $\varnothing 5 \sim \varnothing 130.0\text{mm}$**



Sound – Absorbing Panels



Aluminum Highway Fence (Second Tomei Expressway)