



# RAIL INFRASTRUCTURE

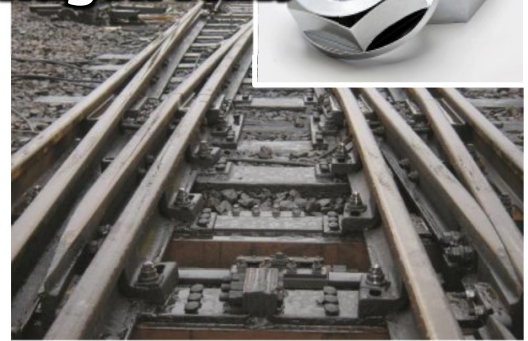
**Safety is Power**

## Anti-Vibration Hexagon Nuts



**[MAIN APPLICATIONS]**

- **Power**  
 Steel Column Flange Stop  
 Stationary Beam  
 Overhead Line Bracket - Band Etc.
- **Signal**  
 Automatic Train Stop (ATS)  
 Impedance Bond  
 Switch Machine  
 Electric Contacts of Control Panel  
 Etc.
- **Track**  
 Fishplate/Insulated Fishplate  
 Mechanical Operated Point  
 Rail Brace  
 Anti-derailing Guard
- **Construction**  
 Railway Station Equipment  
 Station Building Roof  
 Soundproof Wall Etc.



Connecting Plate



Fishplate Bolt



Fishplate Bolt (in the UK)



Switch Adjuster of Point



Rail Brace



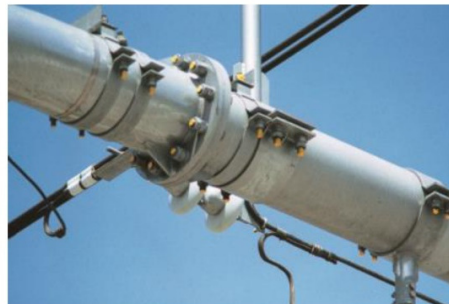
Anti-derailing Guard



Automatic Train Stop (ATS)



Steel Column Flange Stop



Beam



**MADE IN JAPAN |**  
**Since 1974**



Electric Contacts



Movable Bracket Band Stop



Impedance Bond



**Smallest parts that require highest reliability**  
**All Grades & Surface Treatment | Bore Ø5 ~ Ø130.0mm**